

WonderCube[®]

NEWSROOM



Newsroom always on line.
Unlimited digital video storage.
Internet sharing.

SD/HD

MW-N

JVC

The Perfect Experience



WONDERCUBE® NEWSROOM

Digital newsroom

WonderCube® Newsroom means digital storage and automatic production processes for all newsrooms. It changes the way journalism is on TV.

The whole video archives, even with more than a hundred thousand hours of footage and interviews, can be consulted in real time over the network by several users simultaneously, with just a simple mouse click.

WonderCube® Newsroom is a System designed to manage not only file archive and search flows, but also to connect the newsrooms from all over the territory in every single production phase.

From the comfort of his own office, the chief editor can, for example, view every single report produced by his staff, or by any other newsroom connected.

Wonder News, Wonder Online and Single Player form the main software at the base of the System. Wonder News is the storage database, Wonder Online the automatic journalist and TV operator workflow software, and Single Player is the digital player used to launch the steering committee's footages.

WonderCube® Newsroom is an expandable, modular System. It has been designed to meet the complex requirements of national broadcasters, and adapts perfectly to smaller televisions.



Wonder News.

Digital storage is today a fundamental tool for every newsroom. Wonder News is the database that allows you to catalogue, archive and search for video, audio and text files like, for example, news services, video interviews, programs, enquiries and texts.

1. Storage.

Storage is semi-automatic with more than fifty fields and key words. Data input has been designed to take place at the same time as journalistic production. Archivers and journalists collaborate to create and develop a common tool with a high added value: permanent digital archives.

The manual compilation of the database is mainly list-based, in order to bring input times down to a minimum and guarantee methodical work common to all users.



Specific functions allow for quick, intuitive storage. The "marking" function, for example, makes it possible to identify a specific portion of the footage within an archived file. This function proves extremely useful whilst consulting, or when looking for a specific declaration of a person interviewed, without having to re-watch the whole footage. The archiver is also able to preset a series of functions and automatic features in order to optimize data input times. Specific software works away in the background to recognize the technical characteristics of each file/film clip, automatically updating the database.

2. Browsing.

Browsing can be made on different levels, from a simple search by one or more key words (primary or secondary) to a cross-over search involving more than fifty fields.

Each user can search and view the entire archives in low resolution over the network and, simply by clicking his mouse, download the high resolution version, ready for editing.



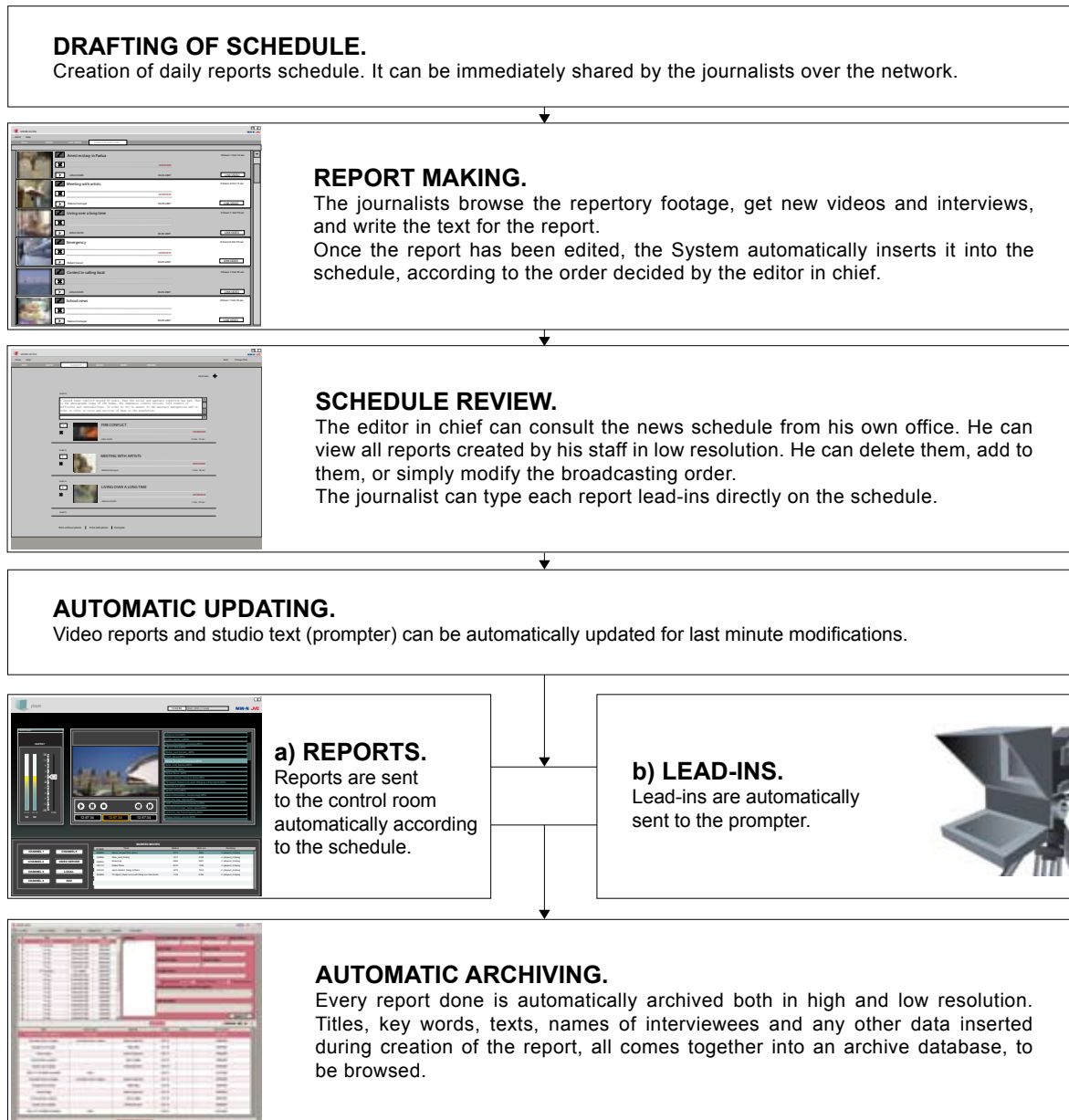
3. Protection and safety.

Access identification through user name and password makes it possible to customize privileges relating to software use. In this way, each operation in each work path can be traced, guaranteeing limits and responsibilities in a view of teamwork.

Wonder Online.

Wonder Online is the software that makes television newsroom processes automatic, connecting all departments within (journalist newsroom, production, steering committee, broadcasting, storage), and optimizing an integrated organization that branches out over the territory.

Wonder Online makes it possible to control progress of work in real time, by checking due dates and timescales.



The software manages the reports edited by the operators, and inserts them automatically into the news schedule. At any time, the editor in chief can view, over the network, the reports created by his staff or by any other newsroom connected, adjusting the daily schedule and inserting launches.

The System is compatible with all major editing software available on the market. The standard videos supported by WonderOnline are DV, MPEG-2, FLV, WMW, MXF, and HD. Once the Schedule is done, the System automatically sends the footage to the control room, in the correct broadcasting sequence, at the same time sending the lead-ins to the studio prompters, ready to be read by the anchorman. The digitalization and automation of the news production production offered by the WonderOnline software guarantees automatic storage at the end of the day, both in high and low resolution, of each and every report, instantly ready to be searched for a new consultation and/or transmission.

Single Player.

Single Player is the software that manages the flow of video contributions from the control room. The synergic software of the WonderCube® Newsroom System means that any changes made to the schedule is automatically transferred to the control room in Single Player. Thereby reducing any possibility for error in the workflow. Control room and editing staff are perfectly synchronized at all times.

Where to store thousands of hours of high resolution videos available for real time consultation?

The solution is simple: in the WonderCube® Storage System. Two options have been designed to provide the perfect solution for the broadcaster:

- storage on a video server for temporarily archive;
- storage on a video server connected up to a DVD or Blu-ray Library for a perfect safe and permanent archive.

The video server and Library together guarantee:

- a reduction in storage costs;
- unlimited storage space;
- simultaneous multi-user access;
- archive sharing over intranet or internet;
- quick data retrieval;
- low resolution preview;
- anti break-in system logic;
- unaltered image quality, even after many downloads.

FUNCTIONS OF THE WONDERCUBE® NEWSROOM SYSTEM

Wonder News Browsing
Browse and print
MD5 file encoding
Username and password access
Different user profiles
Low resolution preview
Export high resolution videos to a defined local folder
Search by key words
Search by technical characteristics (meta data) of archived footage
Preview jog'n'Shuttle
Export high resolution videos to a local folder of the user's choosing
Advanced search by detail
Blu-ray Library archive

Wonder On Line
On-line help
Schedule management
Footage management
Schedule printout
Control rooms connectivity
Program promotion management
Guests address book
Audio feedback
Video feedback
Schedule printout with photos
Text prompter control

Wonder News Insert
Footage, reports, interviews insert
MD5 checksum generation
Photo insert
Advanced details
Guest telephone book
Marking tools
Automatic news import
Insert through pre-set buttons
Audio levels management
Jog'n'Shuttle function

WonderCube® Storage System
Copy files from the Library to a network work folder
Automatic priority management of file copies
Copy and MD5 correspondence checking with logs creation
View Library contents
Automatic management of Library media contents
Timed, programmed, automatic copy

MW-N

via Francesco Scipione Orologio, 2 - 35129 Padua - Italy
 tel. +39.049.8077755 fax +39.049.8074636
 info@mw-n.com www.mw-n.com www.wondercube.tv



JVC Professional Europe Ltd
 European Headquarters
 JVC House, JVC Business Park, 12 Priestley Way,
 London NW2 7BA
 U.K.

